

# Lavatina

117

Barone

Pianoforte

All: *mod<sup>to</sup>*

Handwritten musical score for 'Lavatina'. The score is written on two systems of staves. The first system consists of a vocal line (Barone) and a piano accompaniment line (Pianoforte). The second system continues the piano accompaniment. The music is in 2/4 time, with a key signature of one flat (B-flat). The tempo is marked 'All: mod<sup>to</sup>'. The piano part features a prominent melody in the right hand, often marked with 'ff' (fortissimo) or 'dol.' (dolce). The vocal line is mostly rests, indicating the singer is silent during these passages.



*Se l'i-De...a. Del tra...di...mento a lui*

*fio...ra or-mai ti ren...de se l'a...*



119

mor più non t'ac cen - - - De al dover non

pur man car al dover non



120

*puoi* *mancar* *Di* *pu* *ni* *re il*

*res:*

*suo* *ar di mento* *fia* *mia* *cu* *ra*



Handwritten musical score for the first system, measures 1-4. The vocal line is on a single staff with lyrics in Italian. The piano accompaniment consists of two staves. The first staff features a melodic line with slurs and accents, while the second staff provides a harmonic accompaniment with chords and moving lines. The tempo is marked 'Dim.' (diminuendo).

*in un i - - - stante e in ve - - - der - - - lo*

*Dim:*

Handwritten musical score for the second system, measures 5-8. The vocal line continues with lyrics. The piano accompaniment continues with similar melodic and harmonic patterns. The tempo remains 'Dim.'.

*Di te a - mante ba - - - stei - ratti a*



122

ven - - - di - - - car ba - - - ste - - -

*cred:*



rat - - - ti a ven - - - di - - - car in se - -

*Dim:*

*p.*





Der lo di te a-mante ba - - - ste

rat . . . . . ti a sen . . . . . vi . . . . . car basteratti batte



Handwritten musical score for the first system, measures 1-3. The music is written on three staves. The top staff contains the melody with lyrics. The middle staff contains a complex instrumental accompaniment with many sixteenth notes. The bottom staff contains a bass line with chords and single notes.

ratti a vendi... car batte ratti batte ratti a vendi

Handwritten musical score for the second system, measures 4-6. The music is written on three staves. The top staff contains the melody with lyrics. The middle staff contains a complex instrumental accompaniment with many sixteenth notes. The bottom staff contains a bass line with chords and single notes.

car a vendi car a vendi

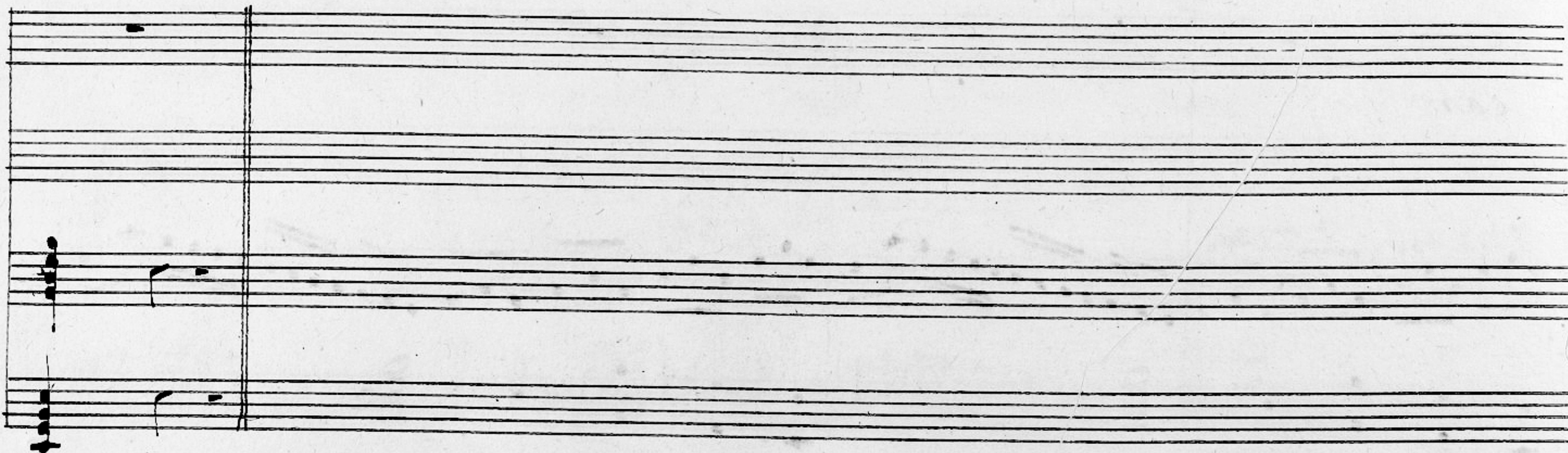


125

car . a ven di car a ven — di...

car







après la page 126

O eleganza degli inglesi

Cavatina

Nell'Opera

Una Visita a Bedlam

Musica di A. Bertini



*Adagio*  
*dol*  
*non troppo*

The first system of the handwritten musical score consists of two staves. The upper staff is in treble clef and the lower staff is in bass clef. Both staves are marked with a key signature of two flats (B-flat and E-flat) and a common time signature (C). The tempo is indicated as 'Adagio' and the dynamics as 'dol' (dolce) and 'non troppo'. The music begins with a series of eighth and sixteenth notes, followed by a more complex passage with many beamed notes.

The second system continues the musical piece. The upper staff features a series of eighth notes, some beamed together, and a few longer notes. The lower staff continues with a similar rhythmic pattern, using eighth and sixteenth notes. The key signature remains two flats.

The third system shows a change in the melodic line of the upper staff, with more sustained notes and some grace notes. The lower staff continues with a steady stream of eighth and sixteenth notes. The key signature remains two flats.

The fourth system concludes the page. The upper staff features a final melodic phrase with some grace notes and a longer note. The lower staff continues with eighth and sixteenth notes. The key signature remains two flats.