

Aria

Crescendo *Alfred* *Largo* *Contrabasso* *to to to* 289



to *br* *to to to to* *poco f.* *f.*



Handwritten musical score for the first system, measures 1-4. The notation includes staves for strings (Violins, Violas, Cellos, Double Basses) and woodwinds (Flutes, Oboes, Clarinets, Bassoons). The lyrics are written below the staves.

Violins: *Sio: ni to to to to*

Violas: *to to to to*

Cellos/Double Basses: *to to to to*

Flutes/Oboes: *to to to to*

Clarinets/Bassoons: *to to to to*

Handwritten tempo marking: *Con 8*

Handwritten musical score for the second system, measures 5-8. The notation includes staves for strings (Violins, Violas, Cellos, Double Basses) and woodwinds (Flutes, Oboes, Clarinets, Bassoons). The lyrics are written below the staves.

Violins: *to to to to*

Violas: *to to to to*

Cellos/Double Basses: *to to to to*

Flutes/Oboes: *to to to to*

Clarinets/Bassoons: *to to to to*

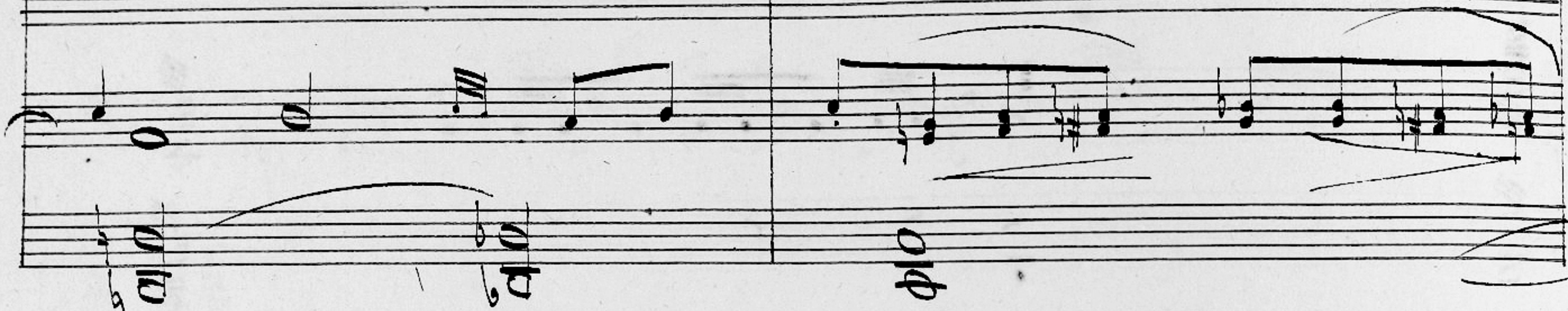
Handwritten tempo marking: *Con 8*

che veggio qual spettacolo suona l'orribil Tromba

2^a

ah! pecunia crudel no con le donne non c'è misericordia o mior

dini non sonno i quadri bei e nonno i quadri nonno i quadri nonno i qua-



drini Cro: to to to to to to to Giol ti ti ti

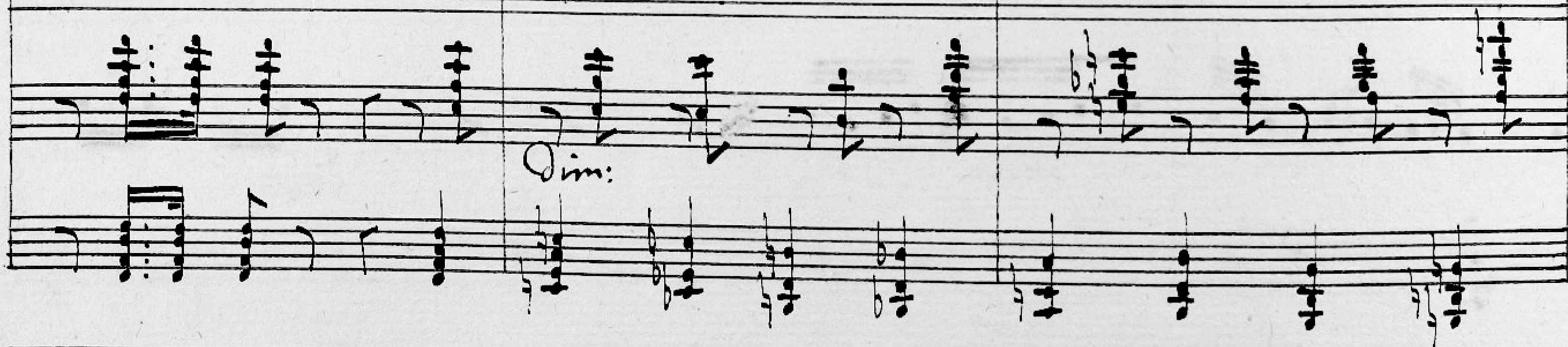


294
pa. crudel tiranno tiranno a more crudel tiranno tiranno a

All.^o mod.^{to}



more tu mi squarciasti il core e quel tuo stral pungente qui ritrovar mi



fa qui ritrovar mi fa qui ritrovar mi fa pa po po po po po 295

po br a quel crudel di botto esce un crudel fagotto po po po po po

296

po ch'esprime crudelmente tutta la crudeltà po po po po po po

po *senti che sera*

mente senti che vera mente che veramente che vera mente l'alma bril

297

Dol. >

lar ti fa l'al - ma bril - lar brillar ti

298

Handwritten musical score for the first system, measures 1-4. The music is written on a grand staff with two staves. The melody is in the upper staff, and the accompaniment is in the lower staff. The lyrics are written below the melody.

fa Cla: la la la la la la Fl: lu lu lu lu lu

Handwritten musical score for the second system, measures 5-8. The music is written on a grand staff with two staves. The melody is in the upper staff, and the accompaniment is in the lower staff. The lyrics are written below the melody.

lu to to to to to to pa tapon da cento idee d'onore to to to to to to

299
to pata pon Ha il mio cervello invaso l'affanno ti lo ti more ti l'af

cred.

p.

fanno ti lo ti more ti la mor - - - - - te senza nato senza

200

nasò la morte senza nasò

tutti mi stanno in-

Con 8^a

Org

loto

torno tutti mi stanno intorno per più mi spaventar tutti mi stanno in

Dim:

201

torno per più mi spaventar per più mi spaventar per più mi spaven

cred:

tar per spa - - - - - a a a a a a a a a a ven

tar

qui poi si sente un



Corno nel lugubre E la

fà sotto voce

Ma vadati da lei venir potrebbe il



to
zio

ed il di segno mio saprebbe frattor

nar

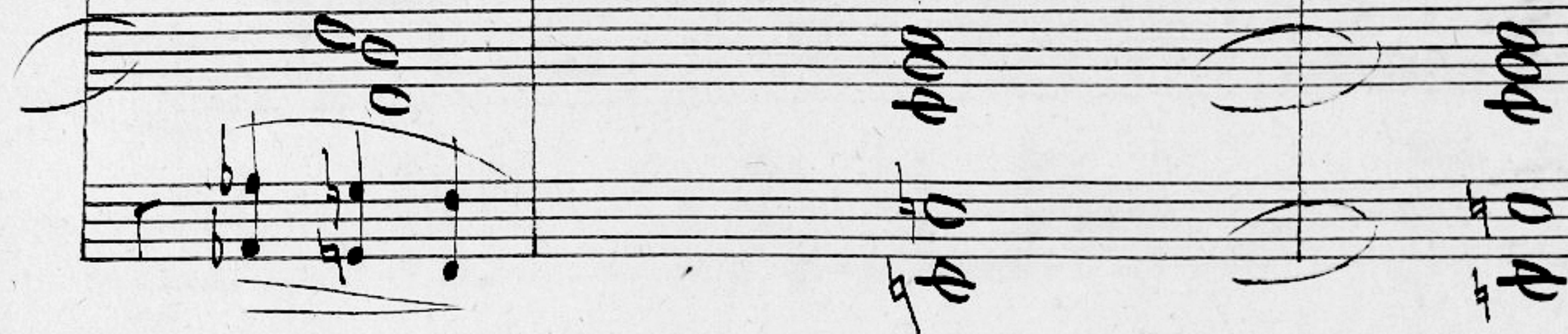
attento, e non parlar attento, e non par

304

lar

sueppo il caso a - maro

sueppo il caso a -



maro

poi senti con gran chiassi, e Trombe, e Violini, e Flauti, e Contro



Bassi poi senti con gran chiassi, e Trombe, e Gio

lini, e Flauti, e Contro Bassi e Trombe, e Gio

lini e Flauti, e Controbassi



Dim.

che fanno un fune - ra - le

al ci us beo già



307

morto

che un un cappel let-to con un Cappel

Handwritten musical score for the first system, measures 307-310. The top staff contains the vocal melody with lyrics. The middle staff contains piano accompaniment with chords and melodic lines. The bottom staff contains a bass line. Dynamics include 'p.' and 'f.'.

letto lo 4 annua sotterrar lo 4 annua sotter

Handwritten musical score for the second system, measures 311-314. The top staff contains the vocal melody with lyrics. The middle staff contains piano accompaniment with chords and melodic lines. The bottom staff contains a bass line. Dynamics include 'p.' and 'pp.'.

208

rar lo vanno a sotter rar

Presto

Dol.

ho detto ho detto ho detto ho detto ho detto che musica qualibro che

309

musica qual estro su fate alò al maestro app — pla —

Handwritten musical score for the first system. It consists of three staves. The top staff contains a vocal melody with lyrics. The middle staff contains a piano accompaniment with chords and some melodic lines. The bottom staff contains a bass line with chords. The music is in a key with one sharp (F#) and a common time signature. The lyrics are written in a cursive hand below the top staff.

usi in quantità applausi applausi in quantità applausi ap

Handwritten musical score for the second system. It consists of three staves. The top staff contains a vocal melody with lyrics. The middle staff contains a piano accompaniment with chords and some melodic lines. The bottom staff contains a bass line with chords. The music is in a key with one sharp (F#) and a common time signature. The lyrics are written in a cursive hand below the top staff.

310

Handwritten musical score for the first system, measures 1-4. The vocal line is on a single staff with lyrics: *plausi in quantità in quan — ti tà in quan — ti*. The piano accompaniment consists of two staves. The upper staff features a continuous sixteenth-note arpeggiated pattern. The lower staff provides a harmonic foundation with chords and moving lines.

Handwritten musical score for the second system, measures 5-8. The vocal line continues with lyrics: *tà in quan — ti tà*. The piano accompaniment continues with the same arpeggiated texture. Measures 7 and 8 include dynamic markings *8* and *8^a* above the piano part, indicating a crescendo or fortissimo section.

