

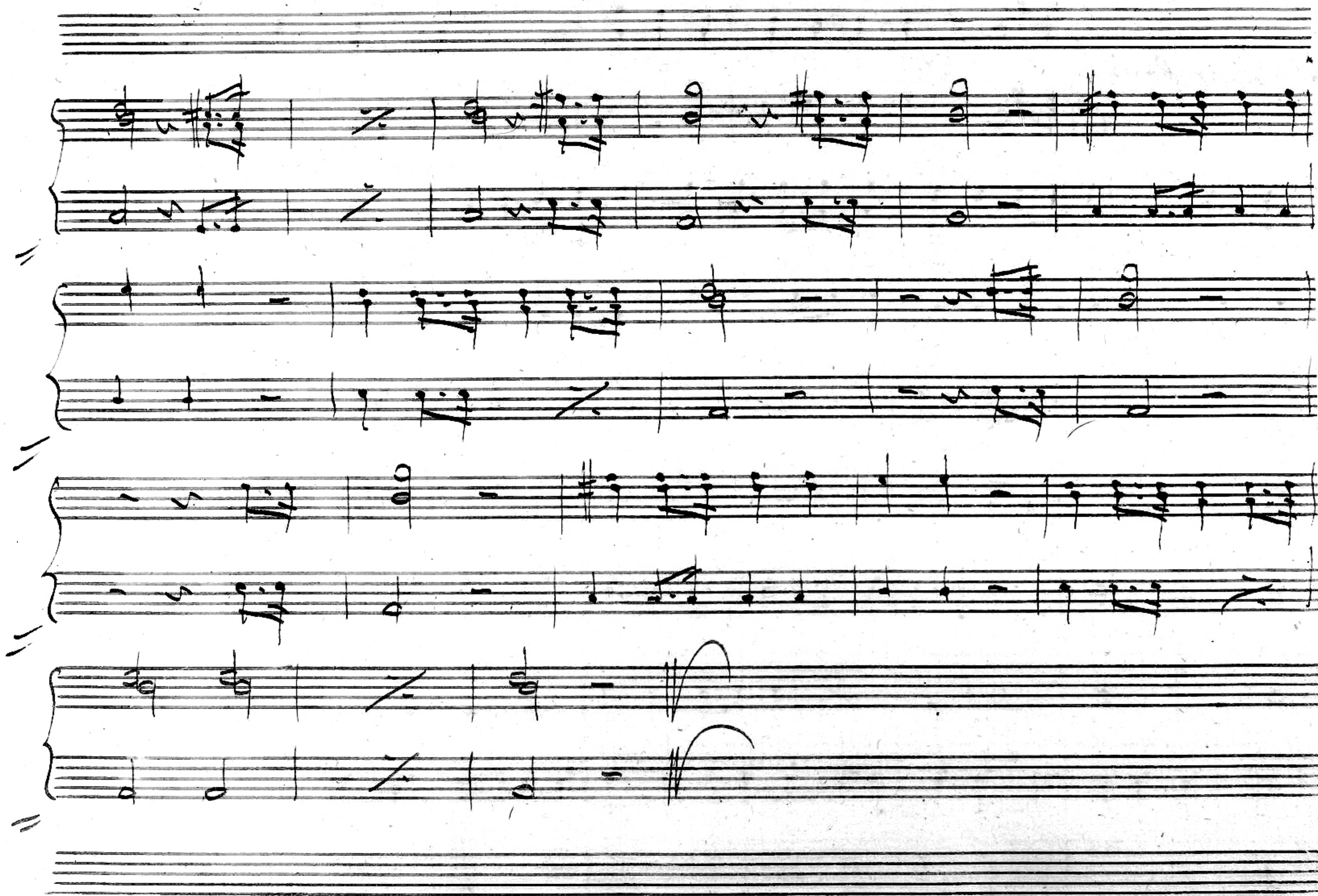
14.
2.

No. 12.

gli Strumenti da fiato dell'atto 2

2 Tromboni

Handwritten musical score for 2 Trombones, Act 2. The score consists of 12 staves. The first two staves are for the Trombones, with a brace and the label '2 Tromboni'. The remaining ten staves are for other instruments, with braces indicating pairs of staves. The music is in 2/4 time, with a key signature of one sharp (F#). The notation includes various notes, rests, and dynamic markings. The score ends with a double bar line and a fermata on the final note of the last staff.



No. 17

Timpani
in D.

Trombe

Handwritten musical score for Timpani and Trombones. The score consists of 12 staves. The first two staves are for Timpani (labeled 'Timpani in D.') and Trombones (labeled 'Trombe'). The remaining 10 staves are for other instruments, likely strings, as indicated by the 'otto' (octave) markings. The music is written in a historical style with various note values, rests, and dynamic markings like 'ff' (fortissimo). The notation includes many accidentals and slurs, suggesting a complex piece. The paper is aged and slightly discolored.

A handwritten musical score on ten staves. The notation is in black ink on aged, slightly yellowed paper. The score is organized into three systems, each beginning with a double bar line and a repeat sign (two parallel slanted lines).
The first system consists of the first three staves. The top staff has a treble clef and contains a few notes with a '3.' above them. The middle staff has a treble clef and contains a few notes with a '3.' above them. The bottom staff has a treble clef and contains a few notes with a '3.' above them.
The second system consists of the next three staves. The top staff has a treble clef and contains a few notes with a '3.' above them. The middle staff has a treble clef and contains a few notes with a '3.' above them. The bottom staff has a treble clef and contains a few notes with a '3.' above them.
The third system consists of the last four staves. The top staff has a treble clef and contains a few notes with a '3.' above them. The second staff has a treble clef and contains a few notes with a '3.' above them. The third staff has a treble clef and contains a few notes with a '3.' above them. The bottom staff has a treble clef and contains a few notes with a '3.' above them.

No. 18.

Tamburo

Piatti

Tromboni

11.

19.

12.

19.

20.

12.

19.

12.

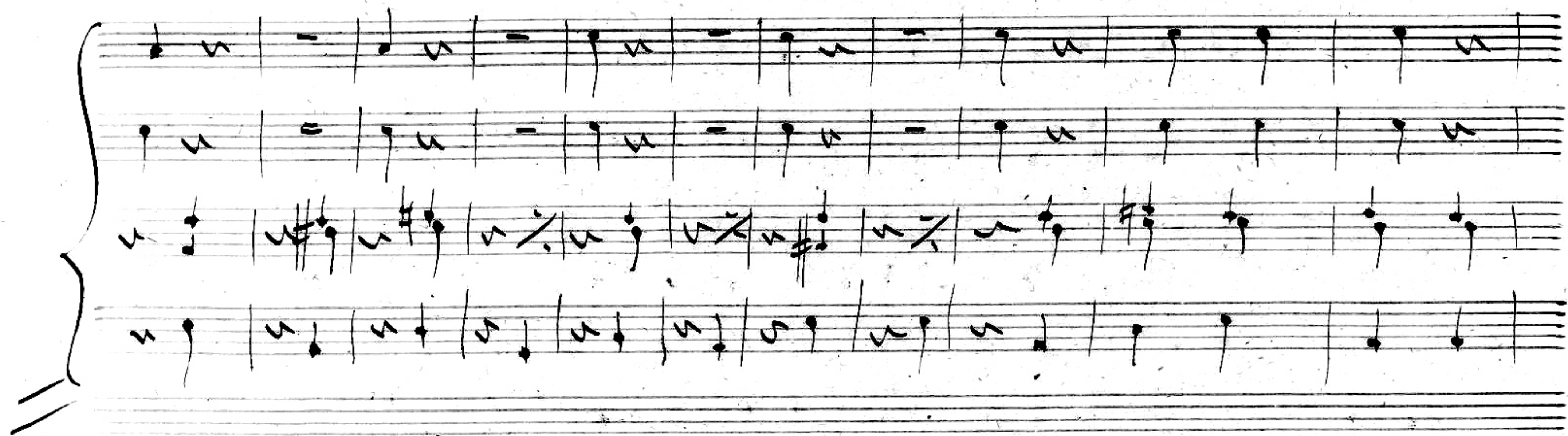
The piano accompaniment for the first system consists of four staves. The first two staves are for the right hand, and the last two are for the left hand. The music is in 2/4 time and features a variety of notes, rests, and dynamic markings. The first staff has a treble clef and a key signature of one sharp (F#). The second staff has a treble clef and a key signature of one sharp (F#). The third staff has a bass clef and a key signature of one sharp (F#). The fourth staff has a bass clef and a key signature of one sharp (F#). The music is written in a clear, legible hand.

Handwritten musical score, first system. The system consists of four staves. The first two staves contain a melody with eighth and sixteenth notes. The third and fourth staves contain a complex, dense texture with many beamed notes and slurs. A double bar line is present at the end of the system.

Handwritten musical score, second system. The system consists of four staves. The first two staves contain a melody with eighth and sixteenth notes. The third and fourth staves contain a complex, dense texture with many beamed notes and slurs. The system concludes with a double bar line and the marking *pp* (pianissimo) written below the staves.

Handwritten musical score, first system. The system consists of four staves. The top two staves contain a melody with various notes and rests. The bottom two staves contain a bass line with notes and rests. The notation is in a single system, with a double bar line at the end. The number "40." is written in the upper right corner of the system.

Handwritten musical score, second system. The system consists of four staves. The top two staves contain a melody with various notes and rests. The bottom two staves contain a bass line with notes and rests. The notation is in a single system, with a double bar line at the end.



11

11

A handwritten musical score on ten staves. The notation includes various note values (quarter, eighth, sixteenth notes), rests, and dynamic markings such as *ff* (fortissimo) and *fz* (forzando). The score is organized into two systems of five staves each, with large curly braces on the left side of each system. The first system covers staves 1 through 5, and the second system covers staves 6 through 10. The notation is dense, with many notes and rests, and some staves have diagonal lines through them, possibly indicating cuts or specific performance instructions. The handwriting is in black ink on aged, slightly yellowed paper.

Handwritten musical score, first system. It consists of four staves. The first two staves are connected by a brace on the left and contain a treble clef. The last two staves are connected by a brace on the left and contain a bass clef. The notation includes various note values (quarter, eighth, sixteenth notes), rests, and accidentals (sharps, naturals). The system concludes with a double bar line and a fermata on the final note of the bass staff.

Handwritten musical score, second system. It consists of four staves. The first two staves are connected by a brace on the left and contain a treble clef. The last two staves are connected by a brace on the left and contain a bass clef. The notation includes various note values (quarter, eighth, sixteenth notes), rests, and accidentals (sharps, naturals). The system concludes with a double bar line and a fermata on the final note of the bass staff.

No. 20.

Trompe *in 2.* *Cor*

Handwritten musical score for No. 20. The top staff is for Trompe (labeled *Trompe* and *in 2.*) and Cor. The middle staff is for Bass (labeled *Bass*). The music is written in a single system with a common time signature. The Trompe part has a treble clef and a key signature of one flat. The Cor and Bass parts have a bass clef and a key signature of one flat. The music consists of several measures of notes and rests, with some dynamic markings like *ff.* and *ff.* appearing below the Bass staff.

No. 22.

Tacet. *Cor* *2.*

Handwritten musical score for No. 22. The top staff is for Trompe (labeled *Tacet.* and *Cor*). The middle staff is for Cor (labeled *2.*). The bottom staff is for Bass (labeled *2.*). The music is written in a single system with a common time signature. The Trompe part has a treble clef and a key signature of one flat. The Cor and Bass parts have a bass clef and a key signature of one flat. The music consists of several measures of notes and rests, with some dynamic markings like *ff.* and *ff.* appearing below the Bass staff. The word *Tacet.* is written above the Trompe staff, indicating a rest for that instrument.